

AEMULUS

OPTIKX, compagnie de création



Technical Rider

V. 2023-10-18

INFORMATIONS

Producer

OPTIKX

Co-choreographer, video and digital designer

Jean-François Boisvenue

Performer and co-choreographer

Giverny Welsch

Sound designer

Arthur Champagne

Lighting design

Marguerite Hudon

Artistic advisor

Armando Meniccaci

Artificial vision developer

Alexandre Gauvin

Stage manager

Kevin Clément

Show duration: 60 min

Discussion with the public (optional): 40 min

Cultural mediation activity (optional): 1h

Artistic and administrative direction: Jean-François Boisvenue

Contact : optikxkitpo@gmail.com / 514-582-1623

NEEDS

TRANSPORT

The presenter must provide parking for an *Econoline* type vehicle.

The touring team consists of a performer, a sound manager, a technical director and a stage manager.

DRESSING ROOM

The dressing rooms must accommodate the touring team.

They must be clean, heated, well-lit and we must be able to lock their doors. They must include tables with adequate lighting for applying makeup, chairs, mirrors, toilets, showers, hooks and hangers for participants' clothes. They must have clean tissues and towels (1 bath towel and 2 hand towels).

Dressing rooms, toilets and showers must be located away from public access.

PERFORMANCE SPACE ET SET DESIGN

Stage

Minimum dimensions required:

Width : 28' (8,5 m)

Depth : 25' (7,6 m)

Height (under the technical grids) : 12' (3,7 m)

****Please note that adjustments can be made depending on the dimensions of the space. Please contact the company to make arrangements.***

Set design

The set design is composed of a black Marley dance mat 25' (7.5m)W x 20' (6m)D (provided by the company), a white cyclorama background 16'(5m)H x 30' (9m)L (which can be provided by the company) and 6 robotic arms. There is also a black box (2'(60cm)L x 2'(60cm)D x 2.5'(75cm)H) which goes down from the ceiling with a motorized winch system. Ideally, the performer enters the stage in the center from under the stands. If this is not possible, we will find a solution to adapt to the space.

Because the robotics arms are controlled through WIFI on the 2,4GHz frequency band, to avoid any interference, we ask if it is possible to turn off the 2,4GHz band of the venue's WIFI network at least one hour before and during the show.

STAGE MANAGEMENT

Lighting and video are handled by 1 person and controlled via QLAB. The company travels with its computers. The DMX signal is sent to the dimmers by the computer via an USB to DMX adapter (provided by the company). The sound is controlled by another person via the *Ableton Live* software. The company tours with its audio interface.

LIGHTING

The presenter must provide:

- Access to the lighting inventory listed on the technical sheet of the venue.
- All wiring necessary to connect the devices.
- A minimum of 40 circuits on 2.4KW dimmers.

**If devices are defective or missing, please notify the company.*

Other needs:

All ellipsoidal spotlights must be equipped with 4 functional shutters.

All instruments must be equipped with gel frame holders, C-clamps and safety cables.

Power distribution must have a sound-independent ground.

The production provides:

- A lighting plan adapted to the venue and the technical sheet.
- All necessary gels.
- A lighting console (computer) with DMX converter.

SON

The presenter must provide:

- Access to the inventory of sound equipment listed on the technical sheet of the venue.
- A sound console with a minimum of eight (8) inputs and eight (8) outputs.
- 4 to 6 loudspeakers (P.A.)
- 1 subwoofer
- 2 direct boxes to connect the contact microphones to the audio interface
- All wiring necessary to connect the devices.
- 2 condenser microphones

The production provides:

- A show computer
- An audio interface.
- 4 contact microphones

**Please note that accommodations can be made depending on the venue's inventory. Please contact the company to make arrangements.*

VIDEO

Projections :

The video projections occur frontally on the screens of the robotic arms and on the cyclo at the back of the stage.

The presenter must provide:

- Access to the video inventory listed on the technical sheet of the venue.

The production provides:

- A show computer for video and lighting.
- 3 short throw video projectors 3400 lumens.
- One (1) 5K lumens video projector (if the venue is not equipped with a 5K (or higher) video projector)
- 3 wifi video shutters
- 1 IR night vision camera
- 1 video capture card
- 1 Kinect motion sensor
- 1 MSI laptop computer connected via Ethernet to the iMac
- 1 Beelink computer

**The company travels with all the wiring necessary for connection, but requests access to the venue's inventory in case of unforeseen circumstances.*

INSTALLATION AND PRELIMINARY SCHEDULE

If a lighting pre-installation is carried out, the installation can be done in 8 hours 30 minutes. If this is not possible, please notify the company. Disassembly can be done directly after the performance in 3 hours.

The presenter must provide at least:

- 1 technical director
- 2 technicians

* All technicians must be able to take part in the installation, in any department. If some technicians can only supervise or if they cannot change departments, please notify us. Ideally, the same technicians are present during the installation and disassembly.

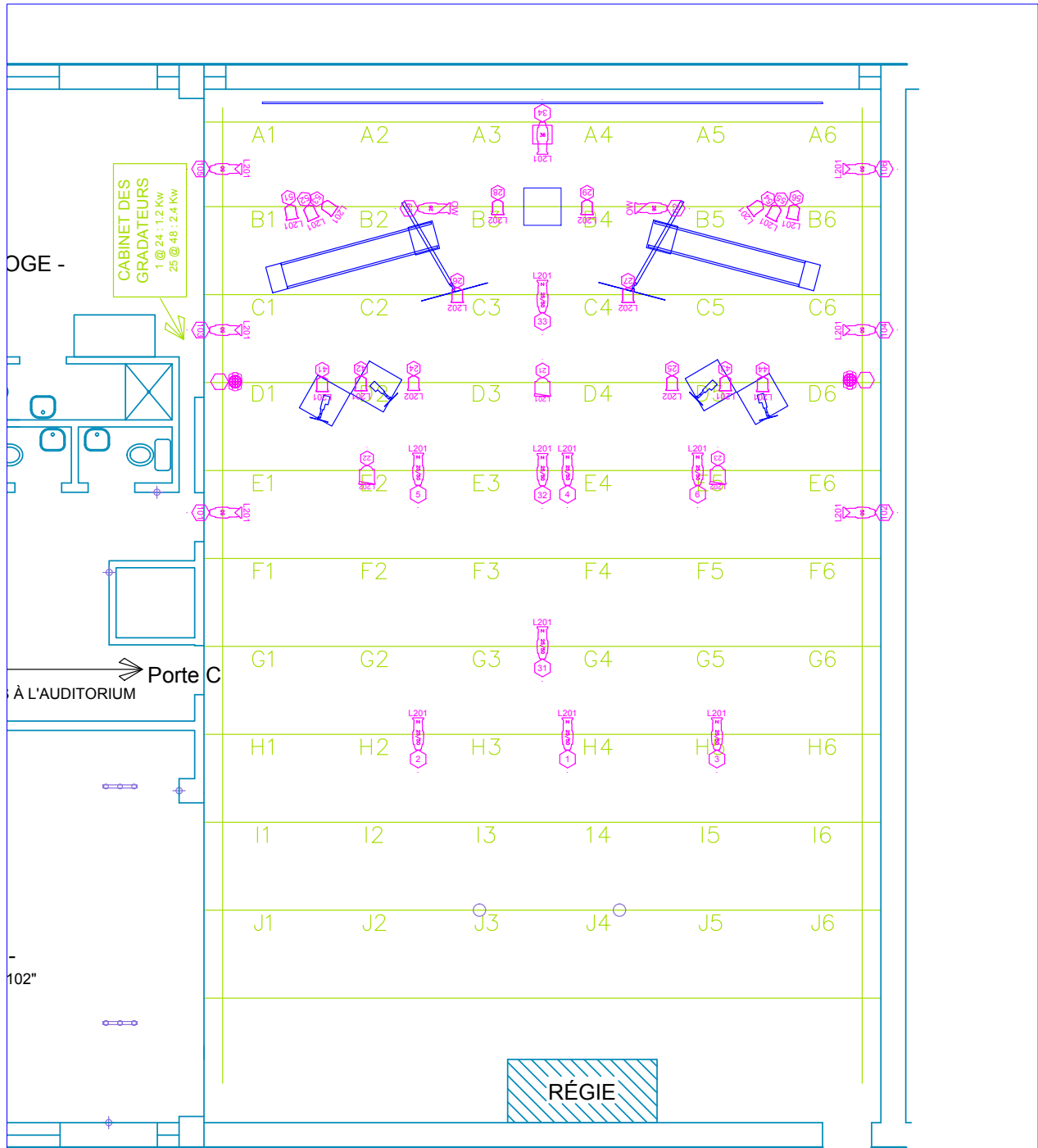
Preliminary schedule (for the installation with a performance on the same day in the case of a lighting pre-installation)

* Schedule to be reconfirmed with the technical tour director, in due time.







- 9:00 à 9:30 : Arrival of the technical team and deloading
- 9:30 à 10:15 : Installation and wiring of the two video projectors on the grid
- 10:15 à 11:00 : Installation of the dance floor and installation of the control room
- 11:00 à 12:30 : Robots/cameras/sound installation and wiring
- 12:30 à 13:30 : Lunch break
- 13:30 à 16:00 : Light and video focus
- 16:00 à 17:00 : Video mapping

17:00 à 18:00 : Intensities (lighting, sound and video)
18:00 à 19:00 : Dinner break
19:00 : Show call
20:00 : Performance

**Technical rider prepared by Jean-François Boisvenue (technical direction). For any questions, please contact the company.*



LÉGENDE

-  Elation Platinum LED Wash mode Stand 12ch (2/2)
-  Leko ETC 25/50° (9/10)
-  Leko ETC 50° (6/6)
-  Leko ETC 36° (1/14)
-  Leko ETC 26° (2/2)
-  Leko ETC 19° (0/4)
-  Fresnel 500w (16/20)
-  Fresnel 2kw (3/4)

Projet
Aemulus
 Chorégraphe
Jean-François Boisvenue

Dessin
**Plan d'éclairage
 La Chapelle**

Dessinatrice
Marguerite Hudon
 margueritehudon13@gmail.com
 514.649.3682